

Academic Health Department Learning Community Meeting

July 26, 2017

Activities of the Council on Linkages Between Academia and Public Health Practice (Council on Linkages) are made possible through funding from the Centers for Disease Control and Prevention under Cooperative Agreement Number NU38OT000211. The content of Council on Linkages activities are solely the responsibility of the Council on Linkages and do not necessarily represent the official views of the sponsor.



Housekeeping Items

- All attendees are muted. If you are using your phone, please choose the “Phone call” option and enter your Audio PIN (found in the “Audio” panel). If you are using a mic, please choose the “Computer audio” option.
- The slides are available for download in the “Handouts” section of your control panel.
- Please use the “Questions” panel to ask questions and submit comments throughout the webinar.
- This webinar is being recorded and will be archived. The archive will be made available following the webinar.



The screenshot displays the GoToWebinar control panel interface. It features a top menu with 'File', 'View', and 'Help'. The main content is organized into three sections: 'Audio', 'Handouts: 1', and 'Questions'. The 'Audio' section includes options for 'Computer audio' and 'Phone call', with 'Phone call' selected. It also displays dialing information: 'Dial: +1 (631) 992-3221', 'Access Code: 760-806-913', and 'Audio PIN: 36'. A prompt asks 'Already on the call? Press #36# now.' and a link for 'Problem dialing in?'. The 'Handouts' section shows a file named 'GoToWebinar Attendee Slides.pptx'. The 'Questions' section has a text input field with the placeholder '[Enter a question for staff]' and a 'Send' button. At the bottom, there is a 'Test' section with 'Webinar ID: 275-096-715' and the GoToWebinar logo.



Council on Linkages Between Academia and Public Health Practice

To improve the performance of individuals and organizations within public health by:

- Fostering, coordinating, and monitoring collaboration among the academic, public health practice, and healthcare communities
- Promoting public health education and training for health professionals throughout their careers
- Developing and advancing innovative strategies to build and strengthen public health infrastructure

Funded by
Centers for Disease Control and Prevention

Staffed by
Public Health Foundation



22 National Public Health Organizations:

- American Association of Colleges of Nursing
- American College of Preventive Medicine
- American Public Health Association
- Association for Community Health Improvement
- Association for Prevention Teaching and Research
- Association of Accredited Public Health Programs
- Association of Public Health Laboratories
- Association of Schools and Programs of Public Health
- Association of State and Territorial Health Officials
- Association of University Programs in Health Administration
- Centers for Disease Control and Prevention
- Community-Campus Partnerships for Health
- Council on Education for Public Health
- Health Resources and Services Administration
- National Association of County and City Health Officials
- National Association of Local Boards of Health
- National Environmental Health Association
- National Library of Medicine
- National Network of Public Health Institutes
- National Public Health Leadership Development Network
- Quad Council of Public Health Nursing Organizations
- Society for Public Health Education

What is an AHD?

- Affiliation of a health department and an academic health professions institution
- Public health's version of the teaching hospital/medical school partnership
- Collaborative relationship to enhance public health education and training, research, and service
- May include a written partnership agreement, shared personnel, and shared resources
- Strengthens linkages between academia and public health practice



Academic Health Department Learning Community

- A national community designed to support the development, maintenance, and expansion of AHD partnerships
- Facilitates shared exploration of the AHD concept and collaborative learning about AHDs
- Brings together public health and healthcare professionals to share AHD-related knowledge and experiences and work collaboratively to create AHD resources and tools
- Members can participate in meetings and webinars, engage in discussion, access resources and tools, and receive guidance to support AHD efforts
- Learn more: www.phf.org/AHDLC



AHD Learning Community: Fast Facts

- Established in 2011
- ~700 members
- Virtual meetings ~bimonthly
- Listserv for communications
- Mentorship program for guidance
- Distance technical assistance to answer questions
- Resources for developing partnerships



Today's Speaker



Paula Masters, DrPH(c), MPH, HCMC
Assistant Dean for Student Services
Director, TN Public Health Training Center
Co-Director, Center for Rural and Appalachian Health
College of Public Health, East Tennessee State University



Northeast Tennessee Academic Health Departments (AHD)

Paula Masters, DrPH(c), MPH, HCMC
Assistant Dean of Student Services
Director, TN Public Health Training Center



COLLEGE *of*
PUBLIC HEALTH

EAST TENNESSEE STATE UNIVERSITY

Academic Health Department (AHD)

- **GOAL**: To bridge the gap between **academia** and **practice** by linking students with public health organizations for long-term field placement opportunities and continued collaboration

Benefits of an AHD

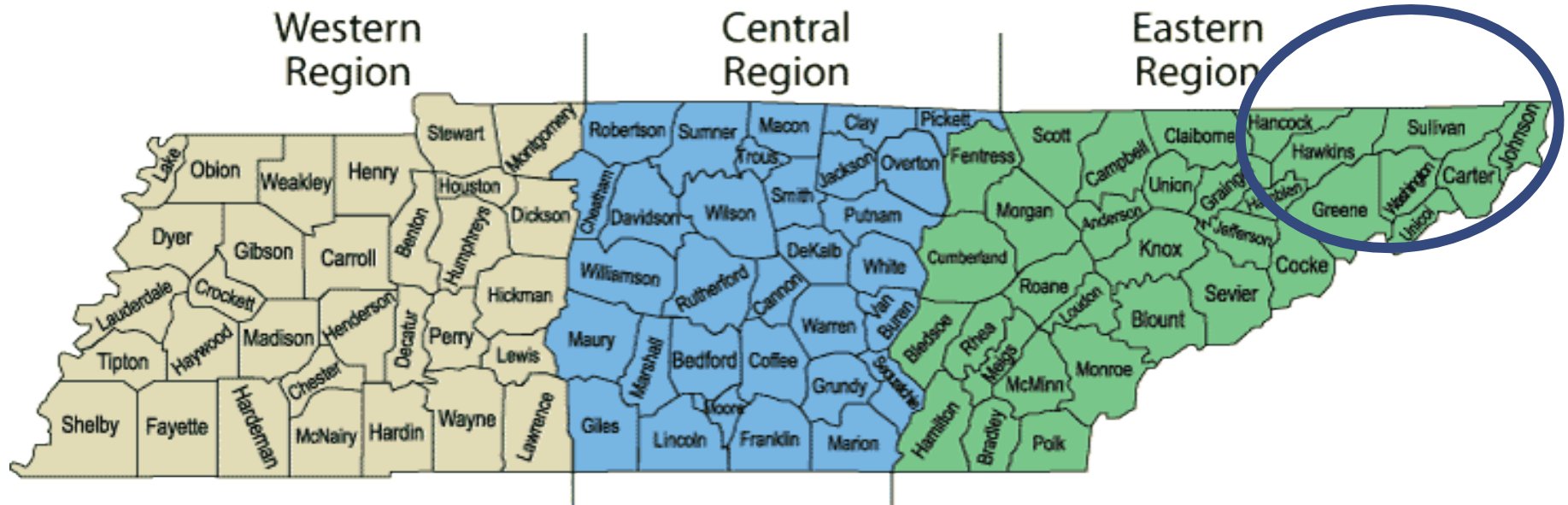
- **Schools of Public Health need:**
 - * Practical experience for students
 - * Opportunities for faculty to incorporate practice-based research

- **Local Health Departments need:**
 - * Increased capacity to conduct ongoing assessment
 - * Support for program innovations

AHD Partners

- College of Public Health
- TN Public Health Training Center (LIFEPATH)
- Sullivan County Regional Health Department
- Northeast Tennessee Regional Health Office

AHDs Service Area

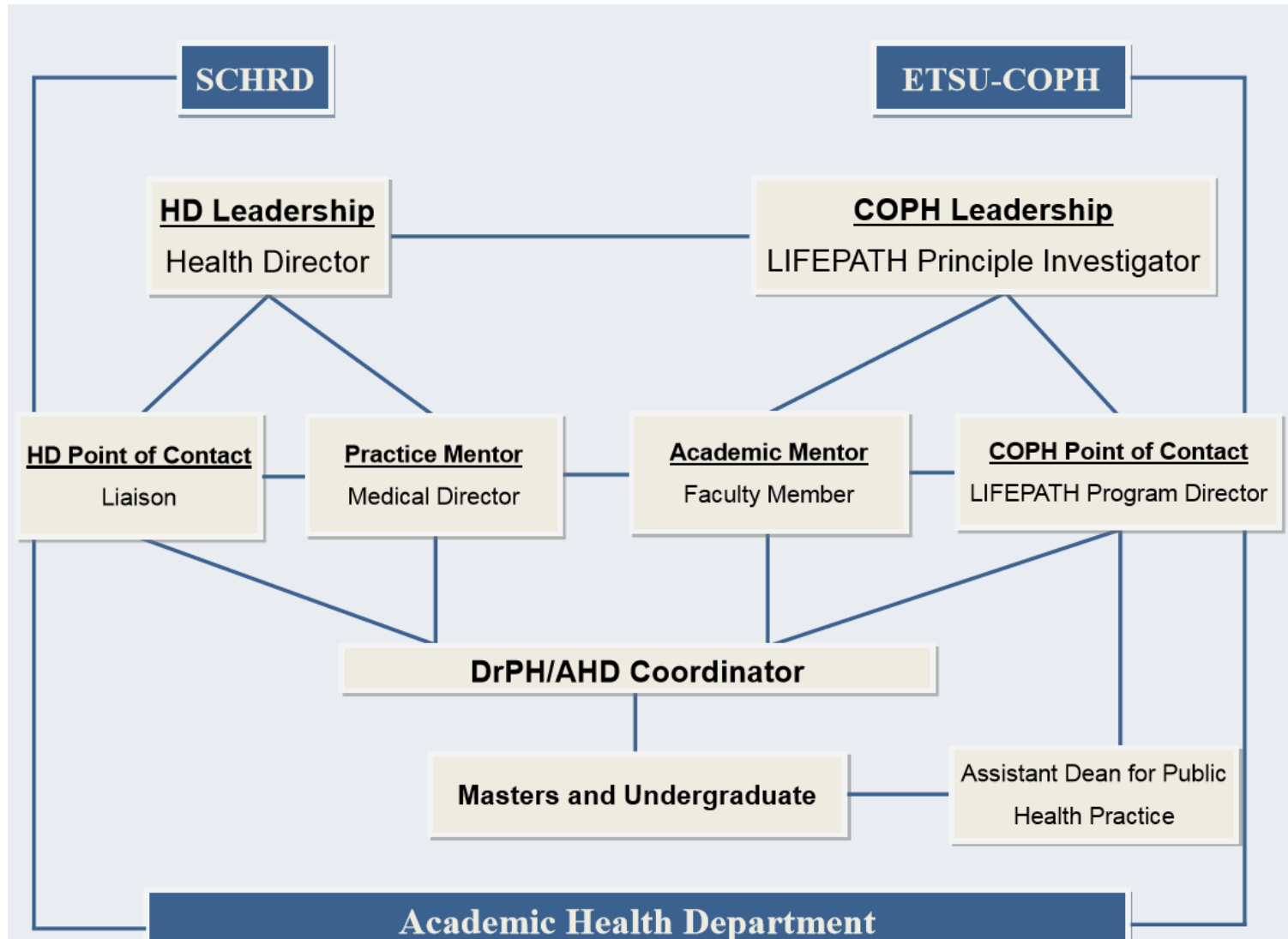


AHD Framework

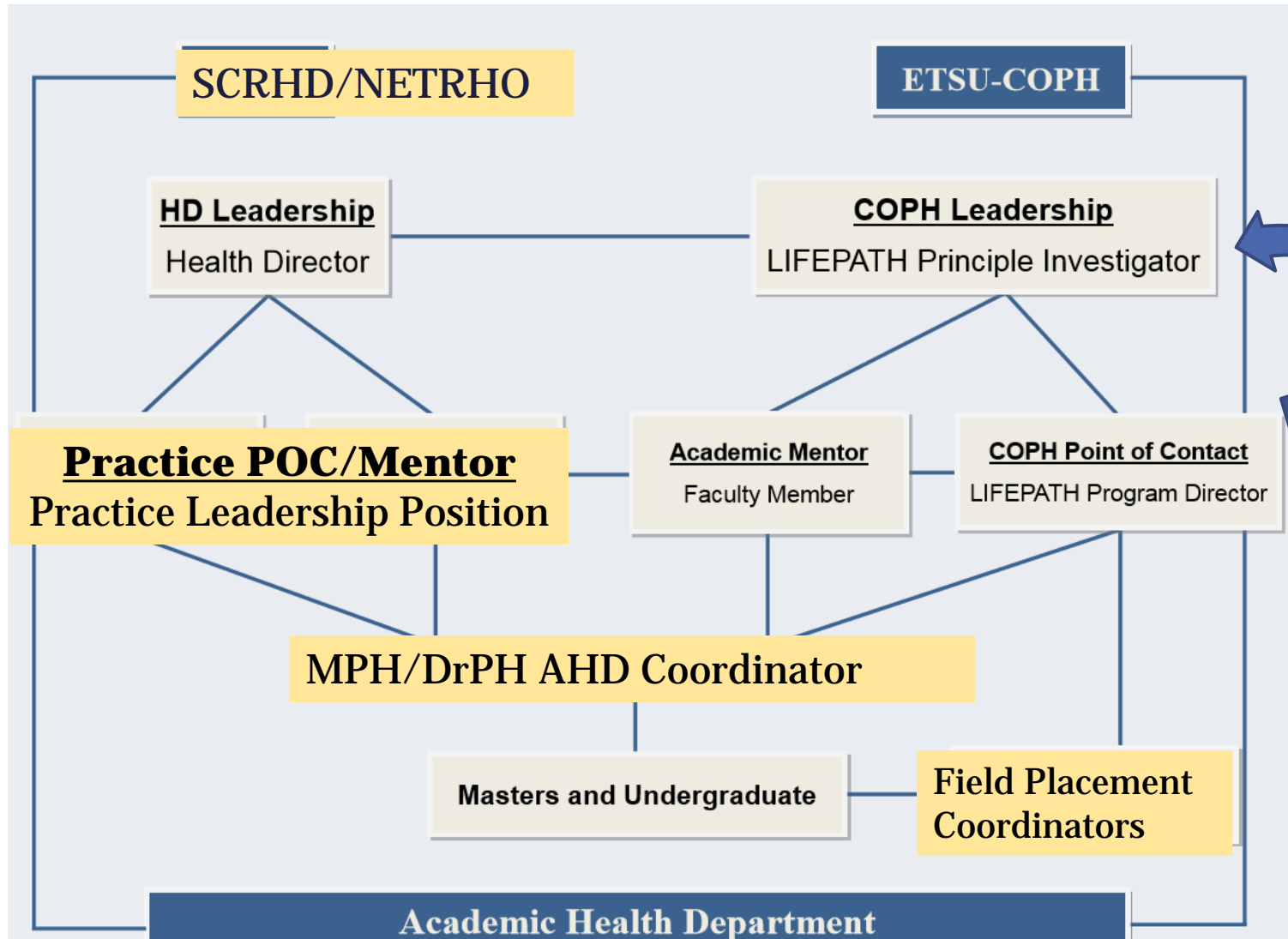
- Students will develop practical **leadership skills** in a health department while **enhancing the capacity** of the SCRHD, NETRHO and the COPH to serve their community and stakeholders.



Our Model-Student Leadership



Our Model-Student Leadership



AHD Coordinator Duties

- **Collaboration** with academic and practice supervisors on research development
- **Project management** in academia and practice
- **Supervision and mentorship** of public health students

Benefits for AHD Coordinators

- Gains **leadership experience** through:
 - Project management
 - Coordination of the local health council
 - Day-to-day facilitation of undergraduate and master's student interns

Benefits for COPH Students

- Students gain real-world **experience**
- Increased availability of and access to **field-experience opportunities**
- Improved **practice-based education** for graduates and undergraduates

Benefits for COPH Faculty

- Increased availability of **student assistance** on research, service and class projects
- An **AHD Coordinator** is available for program development and program management.
- Assistance on **placing students** into fitting field-experience opportunities

Benefits for Public Health Professionals

- Constant **circulation of students** through projects and programs in the health departments
- Ability to take on **new initiatives** with the added student assistance
- An on-site **AHD Coordinator** is available for program development and program management.

Benefits for Community Members

- A more knowledgeable **future generation** of public health professionals
- Students offer valuable **insight** and **assistance** to the development of programs
- Students offer **eager talent** to facilitate community projects and programs

Activities of the AHDs

- **Health Council Facilitation**
- **Community Health Needs Assessment**
- **Emergency Preparedness Projects**
- **Job Shadowing**
- **Field Placements**
- **College and Practice Network Events**
- **Professional Development for Students**

How Can We Improve Our AHDs?

- Faculty buy-in!
 - Plug AHD Coordinators into school-affiliated research opportunities
 - Plug AHD Coordinators into more projects in their region
- Utilize AHD Coordinators in all student placements
 - AHD Coordinators attend on-campus department head meetings
 - Secure additional funding

Contact Information



Paula Masters

Assistant Dean for Student Services

Director, TN Public Health Training Center

Co-Director, Center for Rural and Appalachian Health

Contact:

423-439-4421 / mastersp@etsu.edu



COLLEGE of
PUBLIC HEALTH

EAST TENNESSEE STATE UNIVERSITY

AHD Mentorship Program

- Connects individuals seeking guidance in an area of AHD development or operation with those having experience in that area
- Supports mutual learning and the sharing of expertise
- Mentors and mentees share information and advice and serve as mutual resources in enhancing AHD partnerships and improving the quality of public health
- Join today: www.phf.org/AHDMentorship



Additional Resources

- Stay Informed:
 - AHD Learning Community Listserv – kamos@phf.org
 - Council on Linkages Update – www.phf.org/councilupdate
 - PHF E-News – www.phf.org/e-news

- Email Questions: Kathleen Amos, kamos@phf.org



Public Health Foundation

Strengthening the Quality and Performance of Public Health Practice



TECHNICAL ASSISTANCE & TRAINING

Performance management, quality improvement, and workforce development services

- Customized onsite workshops and retreats
- Strategic planning, change facilitation, accreditation preparation
- Tools, case stories, articles, and papers

www.phf.org/qiservices

www.phf.org/resourcestools



LEARNING RESOURCE CENTER

Where public health, health care, and allied health professionals find high quality training materials at an affordable price

- Comprehensive selection of publications
- Many consumer-oriented health education publications
- Stories and webinars on using The Guide to Community Preventive Services

bookstore.phf.org

www.phf.org/communityguide

TRAIN LEARNING NETWORK

The nation's premier learning network for professionals and volunteers who protect the public's health – over 1.5 million registered learners and thousands of training opportunities

www.train.org



ACADEMIC PRACTICE LINKAGES

Furthering academic/practice collaboration to assure a well-trained, competent workforce and strong, evidence-based public health infrastructure

- Council on Linkages Between Academia and Public Health Practice
- Core Competencies for Public Health Professionals
- Academic Health Department Learning Community

www.phf.org/councilonlinkages

www.phf.org/corecompetencies

www.phf.org

