

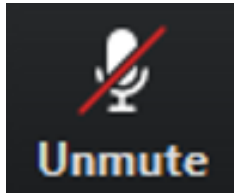
AHD Webinar Series: Partners for Public Health: Pima County Health Department and the University of Arizona

December 8, 2020

*This webinar is made possible through funding from the Centers for Disease Control and Prevention under Cooperative Agreement Number NU38OT000311.
The content of this webinar is solely the responsibility of the presenters and does not necessarily represent the official views of the sponsor.*



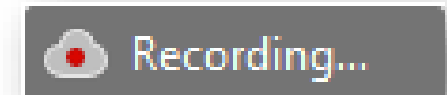
Welcome to Our Webinar!



All attendees are muted.



Please use the Chat to ask questions and share comments throughout the webinar.



This webinar is being recorded and will be archived.



Council on Linkages Between Academia and Public Health Practice

To improve the performance of individuals and organizations within public health by:

- Fostering, coordinating, and monitoring collaboration among the academic, public health practice, and healthcare communities
- Promoting public health education and training for health professionals throughout their careers
- Developing and advancing innovative strategies to build and strengthen public health infrastructure

**Staffed by the
Public Health Foundation**

22 National Public Health Organizations:

- American Association of Colleges of Nursing
- American College of Preventive Medicine
- American Public Health Association
- Association for Community Health Improvement
- Association for Prevention Teaching and Research
- Association of Accredited Public Health Programs
- Association of Public Health Laboratories
- Association of Schools and Programs of Public Health
- Association of State and Territorial Health Officials
- Association of University Programs in Health Administration
- Centers for Disease Control and Prevention
- Community-Campus Partnerships for Health
- Council of Public Health Nursing Organizations
- Council on Education for Public Health
- Health Resources and Services Administration
- National Association of County and City Health Officials
- National Association of Local Boards of Health
- National Environmental Health Association
- National Library of Medicine
- National Network of Public Health Institutes
- Society for Public Health Education
- Veterans Health Administration



What is an Academic Health Department Partnership?

- Partnership that joins a health department and an academic institution
- Collaborative relationship to enhance public health education and training, research, and service
- Public health's version of the teaching hospital/medical school partnership
- May include a written partnership agreement, shared personnel, and shared resources
- Strengthens linkages between public health practice and academia



Helping Academic Health Departments Grow

Academic Health Department Learning Community

- National community supporting the development, maintenance, and expansion of AHD partnerships
- Venue to explore the AHD partnership concept and learn about AHD partnerships
- ~1,200 members

Variety of Activities:

- Examples and stories of AHD partnerships
- Webinars by AHDs
- Partnership agreements
- Listserv
- Technical assistance



Academic Health Department (AHD) Partnerships and AHD Learning Community Members



Today's Presenters:



Julia Flannery, BS
Pima County Health Department



Emily Waldron, MPH
Mel & Enid Zuckerman College of Public Health
University of Arizona



Partners for Public Health:

Pima County Health Department and University of Arizona's Zuckerman College of Public Health



Julia Flannery, BS
Pima County Health Department



Emily Waldron, MPH
Mel & Enid Zuckerman College of Public Health
University of Arizona

Two Public Health Institutions



Pima County
Health Department (PCHD)



UArizona Mel and Enid Zuckerman
College of Public Health (MEZCOPH)

Part One:
Learning from the
Past and Looking
Towards the Future

(2017-2018)

Early Efforts in Building a Relationship

- Informal relationships with UArizona College of Public Health
- Large and imposing institutions
- Occasional collaborations
 - Western Regional Public Health Training Center
 - Alumni working at health department reaching out to past MEZCOPH professors
 - Short-term grant-funded projects
- Changes, requests, and evolution
 - Seek public health accreditation
 - UArizona expresses greater need for public health intern program
 - Decision to build an AHD partnership with UArizona
 - Identify missing components needed to move forward

Early Conversations at Zuckerman College of Public Health

- Absence of an established partnership with the Health Department
- Lack of clear and consistent contact with staff at the Health Department
- Discussions circled around what Zuckerman College of Public Health needed and identifying staff to help move / foster relationship
 - Previous American Lung Association
 - UArizona position as the Online MPH Program Advisor
 - Developed relationships with a few Health Department staff
- Actively participated in planning meetings and discussions

The Health Department Takes Stock of the Relationship

- Pattern of stumbling and restarts
- Interested in long-term relationship
- Initial step, find mutual denominator
 - STUDENTS and INTERNSHIPS
- Focus on developing a robust internship program
- Had to get to Work!
 - Needed to effectively engage students
 - Appeal to different degree programs and levels
 - Have protocol, process, and leadership support



Part Two: Pivotal Moment (June 2019)



Pivotal Moment

- Mutual buy-in became apparent in June 2019
 - HD leadership
 - UArizona Dean of Public Health
- Bi-directional communication
 - Dedicated resources
 - Synergistic dialogue “working together to accomplish more”
- Vision, activities, and being mutually beneficial
- Reinvigorate the relationship



Investment In Relationship

Pima County Health Department

- Leadership Support
- Achieved accreditation (2016)
- Western Regional Public Health Training Center collaborations
- Dedicate resources
- Energetic commitment

MEZCOPH

- Seeking academic re-accreditation
- Buy-in from MEZCOPH leadership
- New Interim Associate Dean of Community Engagement
- Creation of the Community Engagement and Outreach Coordinator position
- Energetically committed

Part Three:
A Win-Win: Internship
Programs

(2017- Present)

Highlights of the Health Department Internship Program

- 2016 health department had six interns – intern program under development
- Fall 2017 launched a more defined internship program
- Within a few short weeks
 - Overwhelmed
 - Lacked sufficient screening and matching process
 - Staff were not prepared
 - Internal processes were strained and fraying
- Paused (spring 2018) to retool and reinforce where needed
- Relaunched fall of 2018
 - Accepted 23 students fall semester
- TOTALS
 - 2018 / 39 interns
 - 2019 / 55 interns
 - 2020 / 9 interns (due to COVID 19)
 - 2021 plans to create more virtual internship projects. Develop internships within the vaccine distribution clinics.



Internship Program

Zuckerman College of Public Health

- Communicating Health Department's internship program to students
 - Competitive Selection Process
- Laid the foundation to work with additional local health departments
- Inspired MEZCOPH to create an internal internship program
- Students with graphic design background



Hawo Muhina

Year in School: Senior

Major: Public Health Emphasis Health Promotion

Role with the Academic Health Department: Planning and organizing events to strengthen connections between Cochise County and MEZCOPH.

Plans After Graduation: My plan after graduation is to attend graduate school at the University of Arizona and pursue my masters in Maternal and Child Health.

Fun Fact: I like photography and outdoor activities.



Catrina Caltagirone

Year in School: Senior

Major: Public Health

Role with the Academic Health Department: Intern.

Plans After Graduation: Masters in Nursing.

Fun Fact: I am from San Francisco.



Maxwell Allen

Year in School: Senior

Major: Communication with a Minor in Public Relations

Role with the Academic Health Department: I help coordinate meetings between MEZCOPH faculty and Pima County Health Department staff to develop learning objectives and infographics for the mini-public health school.

Plans After Graduation: I would like to move to Portland and spend my first few years working

Engaging Students: Creative Approach

Pima County Health Department

- Set aside five spaces for UArizona students to attend Health Department new employee orientation
- Offered quarterly, four hours long
- Approximately 15 to 25 employees attend

Zuckerman College of Public Health

- Advertises opportunity to students
- Develop application criteria
- Interview and screens students
- Selects five students

Part Four:
The Nuts and Bolts of A
Growing Partnership
(June 2019 - February 2020)

Formalizing the Partnership

- Memorandum of Understanding finalized
- Planning meetings
- Develop inaugural action plan
- Kick-off event (August 2019)



Academic Health Department Partnership

THE UNIVERSITY OF ARIZONA

*** Operating Hours During COVID-19 ***

Directory Location The H



THE UNIVERSITY OF ARIZONA
Mel & Enid Zuckerman
College of Public Health

Home About Undergraduate Graduate Research Faculty Outreach

Pima County Health Department

Overview

In June 2019, the Mel and Enid Zuckerman College of Public Health and Pima County Health Department signed a Memorandum of Understanding to establish the Academic Health Department. This mutually beneficial partnership is designed to enhance public health



THE UNIVERSITY OF ARIZONA

*** Operating Hours During COVID-19 ***

Directory Location The Hub Contact Us Newsletter



THE UNIVERSITY OF ARIZONA
Mel & Enid Zuckerman
College of Public Health

Home About Undergraduate Graduate Research Faculty Outreach Alumni & Donors

Academic Health Department

Overview

The Mel and Enid Zuckerman College of Public Health is committed to partnering with local health departments to establish and formalize Academic Health Departments. Academic Health Departments are mutually beneficial

Search

Outreach

- Collaborations
- Centers and Offices
- Community Engagement and

Relationships are Key Creating Space and Place to Collaborate



AHD Partnership Outcomes

- Mini-Public Health Schools
 - Seven Mini Public Health Schools (Over 250 attendees)
- Campus Seminars and tours at the Arizona College of Public Health Fall 2019
- Designated Campus Colleagues (DCC) Status
 - Faculty Department Chair sponsored DCC cohorts.

AHD Partnership Outcomes

- Robust Internship Program (PCHD & MEZCOPH Program)
- The AHD Website Grew and Became a Widely Used Resource
 - Community needs and resources are gathered
- Smoke-Free Wildcat Club (Students, Faculty, and Health Department Staff)
- Annual Academic Health Department Western Regional Public Health Summit
 - 2019 launched
 - 2020 postponed
 - 2021 yet to be scheduled

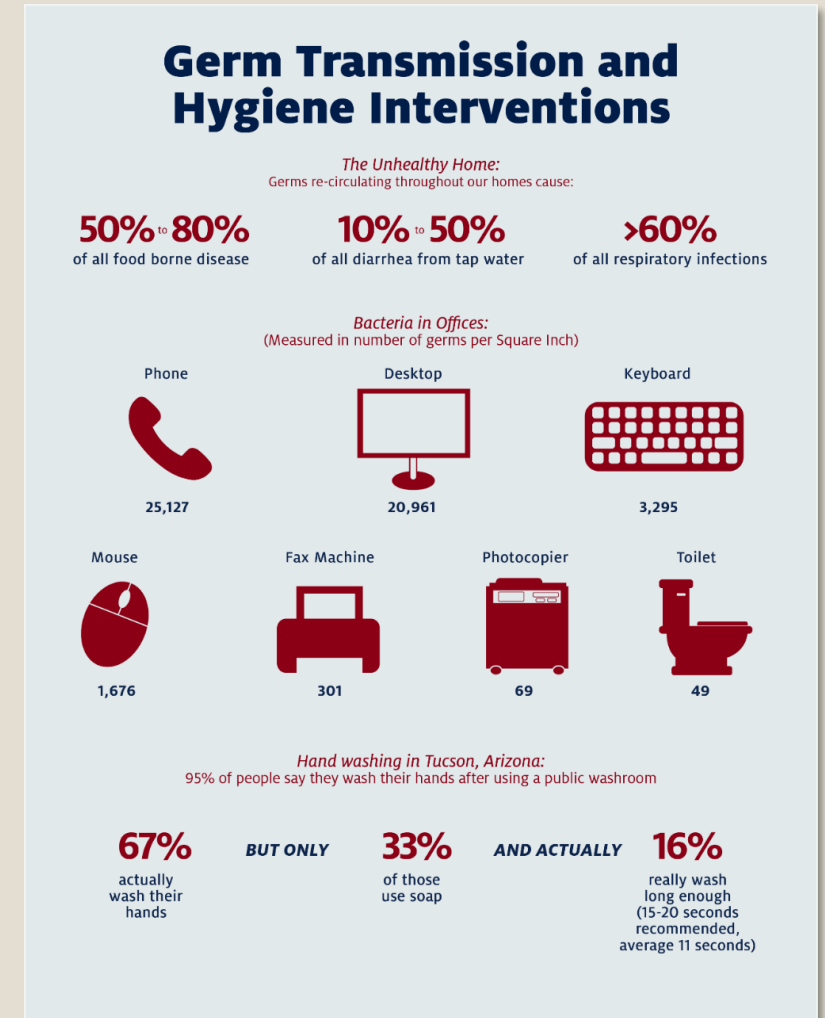
AHD Partnership Outcomes



Planning Committee for 2019 Academic Health Department Western Regional Summit

AHD Partnership Outcomes

- Graphic Design Internship program began to grow
 - Link to bring faculty and health department staff together on projects
 - Tangible
- Request from faculty to support join projects with health department



AHD Partnership Outcomes

Proposal Accepted!

Yellow Fever Exhibit

- National Library of Medicine Politics of Yellow Fever Exhibit
 - This was quick request/turnaround
 - AHD relationship collaborative opportunity
- Collaborate for panel presentation
- Community Education
 - Library display and promotion



AHD Partnership Outcomes

Stock Inhaler Program

- UArizona professor and researcher, Dr. Lynn Gerald, identified the public health benefit of schools having albuterol inhalers available
- March 2017
 - HB 2208 “Stock Inhaler for Schools” was signed into law, allowing schools to purchase, store, and administer albuterol
- By late 2019
 - Schools had begun implementation in Pima County.
- In spring of 2020
 - The program transitioned from UArizona to PCHD for continued implementation and sustained support

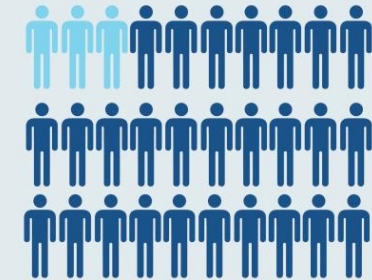
The Pima County Stock Inhalers for Schools Program:

A collaboration to increase access to rescue medication in Arizona schools

Did you know?

10.9% of children in Arizona have an asthma diagnosis

Asthma is one of the most common chronic conditions in children and in a classroom of 30 kids, 3 will have asthma



For asthma, there are many types of treatment, including:



inhaled corticosteroids which work to reduce inflammation in the airways and quick relief medications which work to relax smooth muscles in the airway to provide relief of symptoms

Infographic developed by
AHD intern
Elizabeth Richardson

Part Five:

COVID-19

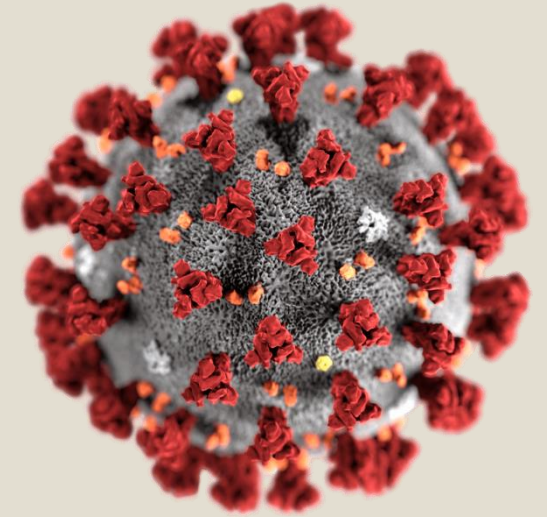
The ADHD Relationship
is Put to the Test!

(February 2020-Present)

The Groundwork in Place for a Coordinated Response

- Strong Relationships
 - Comfortable picking up the phone and calling each other
 - Epidemiologist at the Health Department and MEZCOPH
 - SAFER Program
 - History of collaboration between Health Department and MEZCOPH with elementary and high schools
- Trust
 - Established record of successful collaboration
- AHD Point of Contact Established
 - Health Department and MEZCOPH employees have a point person to assist with finding the “right” contact
- Health Department Understand Public Health Student Skill Set
 - Internship Program

Collaboration Examples



COVID-19

- College-wide public health panel in February 2020 with Health Department
 - Health Department represented on the panel
- Supporting the public health response team at the EOC
 - Faculty long-term care/infection control/tracking numbers
 - SAFER student program assisting in investigations of positive COVID-19 cases
 - UArizona staff and faculty personally volunteering for PCHD COVID-19
- Practitioners and faculty formed the local Incident Command System

Collaboration Examples

COVID-19

- Faculty, public health students, and graphic design students support Health Department with K-12 School Response
- Translating data into visual messaging for community members
 - Graphics Library



Part Six:
Lessons Learned &
Next Steps

Sustaining and Cultivating AHD Partnerships

- Celebrate accomplishments within the AHD partnership
- Ignite creative and dynamic thinking
- Enter into collaborative research projects with a plan
- Sustainability
- Consider creative ways to fund position that supports AHD partnerships
- Check-in, communicate, show you care

Sustaining and Cultivating AHD Partnerships

BUILDING A STRONG AHD PARTNERSHIP TAKES WORK

- Overcoming bureaucratic processes
- Make the AHD partnership a priority
- Acknowledging lack of support and/or engagement
- Follow-up, follow-up, follow-up
- Celebrate accomplishments within the AHD partnership
- Ignite creative and dynamic thinking
- Enter into collaborative research projects with a plan
- Sustainability of the partnership

What Is On The Horizon?

- Further develop AHD partnerships with health departments, health districts, community colleges, as well as other colleges and universities
- Connect with public health faculty and health department staff to:
 - Reflect on COVID-19 response
 - Conduct joint presentations on lessons learned and share with each other
 - Build on new partnerships resulting from COVID-19

What Is On The Horizon?

- Faculty and Health Department staff combine efforts to roll out vaccine for the community
- Continue to support the K-12 schools for safe return of students
- Continue to support higher education students and faculty with safety guidelines and protocols
- Continue collaboration and coordination of community wide data regarding COVID prevention practices
- Increase collaborative engagement in mental health and suicide prevention strategies

What Is On The Horizon?

- Resume internship program within COVID protective measures
- To extend AHD partnerships with additional higher education institutions/local health departments
- Resume student participation in Health Department new employee orientation
- Identify mini-public health school topics to present through virtual formats
- Identify community based projects/interventions to seek funding for shared research projects
- As a HD, we are expanding our data collection, assessment, and analysis to include MEZCOPH partners

Contact Information



THE UNIVERSITY OF ARIZONA
Mel & Enid Zuckerman
College of Public Health

Julia Flannery
Pima County Health Department
(520) 724-7989

Julia.Flannery@pima.gov

Emily Waldron
University of Arizona
(520) 626-9121

ewaldron@Arizona.edu

Questions?



Julia Flannery



Emily Waldron



Bill Keck



AHD Partnership Resources

- Academic Health Department Learning Community: www.phf.org/AHDLC
 - Peer community supporting public health practice/academic collaboration
- [AHD Webinars](#)
 - Webinars focused on AHD partnerships
- [AHD Resources and Tools](#)
 - Library of resources and tools to support development, maintenance, and expansion of AHD partnerships
- Council on Linkages Update: www.phf.org/councilupdate
 - Newsletter featuring the latest AHD partnership resources

Questions?

Contact Kathleen Amos at kamos@phf.org.

